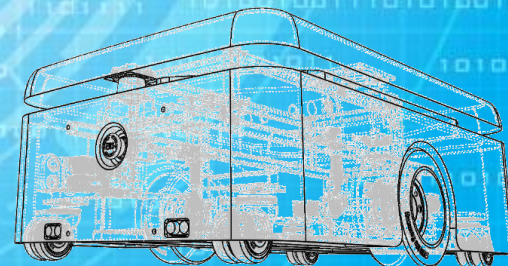


機電工程署  
EMSD



RV TECHNOLOGY

# NEWEST AUTONOMOUS MOBILE ROBOT TECHNOLOGY

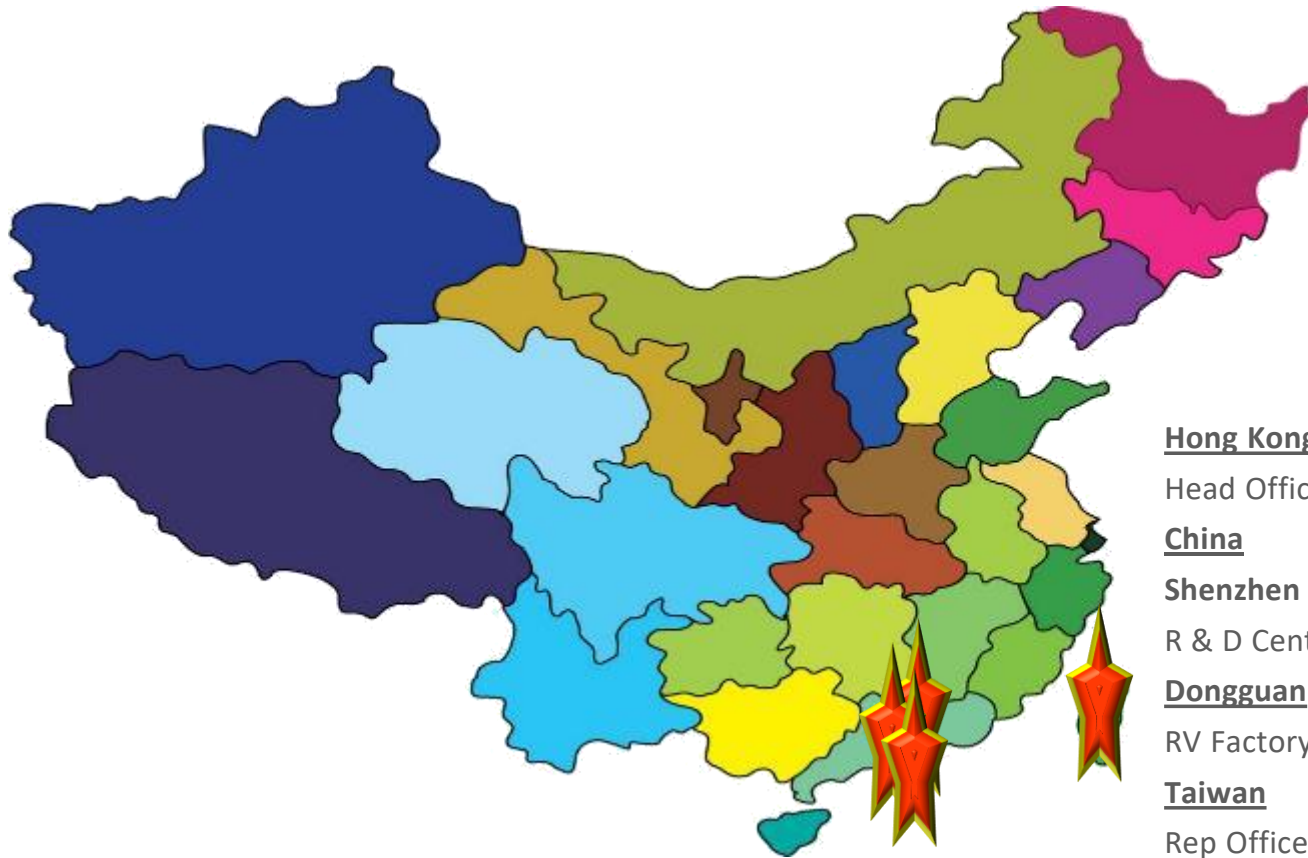




## Industry 4.0

开发新世代智能自动化技术，引领亚洲进入工业4.0的阶段  
to develop the new generation of smart automated technology  
and to lead the way to industry 4.0 in Asia

# OUR LOCATION



Hong Kong

Head Office



China

Shenzhen

R & D Center



前海深港青年梦工场  
Shenzhen-Hong Kong Youth  
Innovation and Entrepreneur Hub

Dongguan

RV Factory

Taiwan

Rep Office

## WE FOCUS ON INDUSTRY 4.0 AUTOMATION

- Aviation
- Food Process
- Packaging

Automation



- Smart Warehouse
- E-Commerce

Logistic 4.0

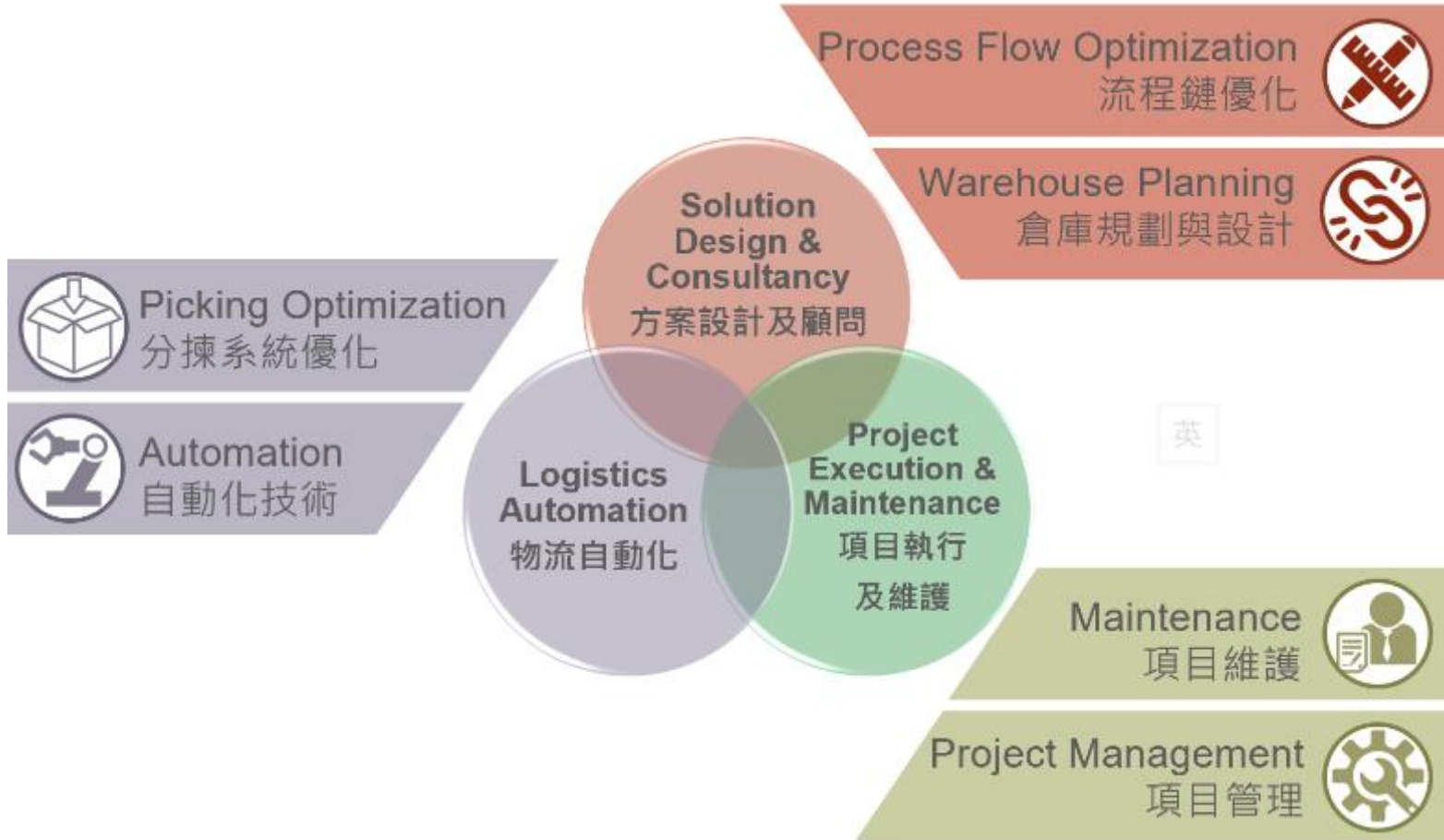


- Automatic Storage
- Unmanned Express

Smart Express



# LOGISTICS TECHNOLOGY SERVICE



# EVENT HIGHLIGHTS



## Smart Warehouse Launch Event



【星島網訊】全球正邁向「工業4.0」時代，內需市場轉性，傳統工廠或工業生產的製造性，漸漸向發展製造性公司「企業轉型計劃」的技術公司，成功建立大中華區製造業製成與物流解決方案，更在市場佔有率佔優勢，提供高機械人技術服務與條件。電機技



智能倉庫使用大量機械人技術



**科技園公司推智能倉庫**

【本報訊】位於沙田的香港科學園，最近推出一項名為「智能倉庫」的創新技術，為製造業提供一個全新的生產及物流解決方案。這項技術由科技園公司與本地企業合作開發，旨在提高生產效率，減少人力成本，並實現倉庫的智能化運作。

科技園公司表示，這項智能倉庫技術採用了先進的機械人技術，能夠自動完成倉庫內的存取、搬運和堆棧工作。通過與生產線的集成，該系統可以實現從生產到倉儲的全程自動化，大大縮短了生產週期，並提高了生產的靈活性。

此外，該智能倉庫還具備數據分析功能，能夠实时监控倉庫的運作情況，並根據數據進行優化調整。這不僅有助於提高倉庫的利用率，還能為企業提供寶貴的數據支持，以輔助其生產決策。

科技園公司表示，這項智能倉庫技術的推出，標誌著其在智能制造領域的又一重大突破。未來，該公司將繼續加大研發力度，推動更多創新技術的落地應用，為製造業的發展貢獻力量。



# EVENT HIGHLIGHTS

Industrial Automation Shenzhen 2017



ALMC 2017



# EVENT HIGHLIGHT

September 2017 – Chief Executive of HKSAR visited RV for the 2nd time in Qianhai



March 2018 – Logistic and warehouse Automation Seminar at PolyU (Textile and Clothing department)

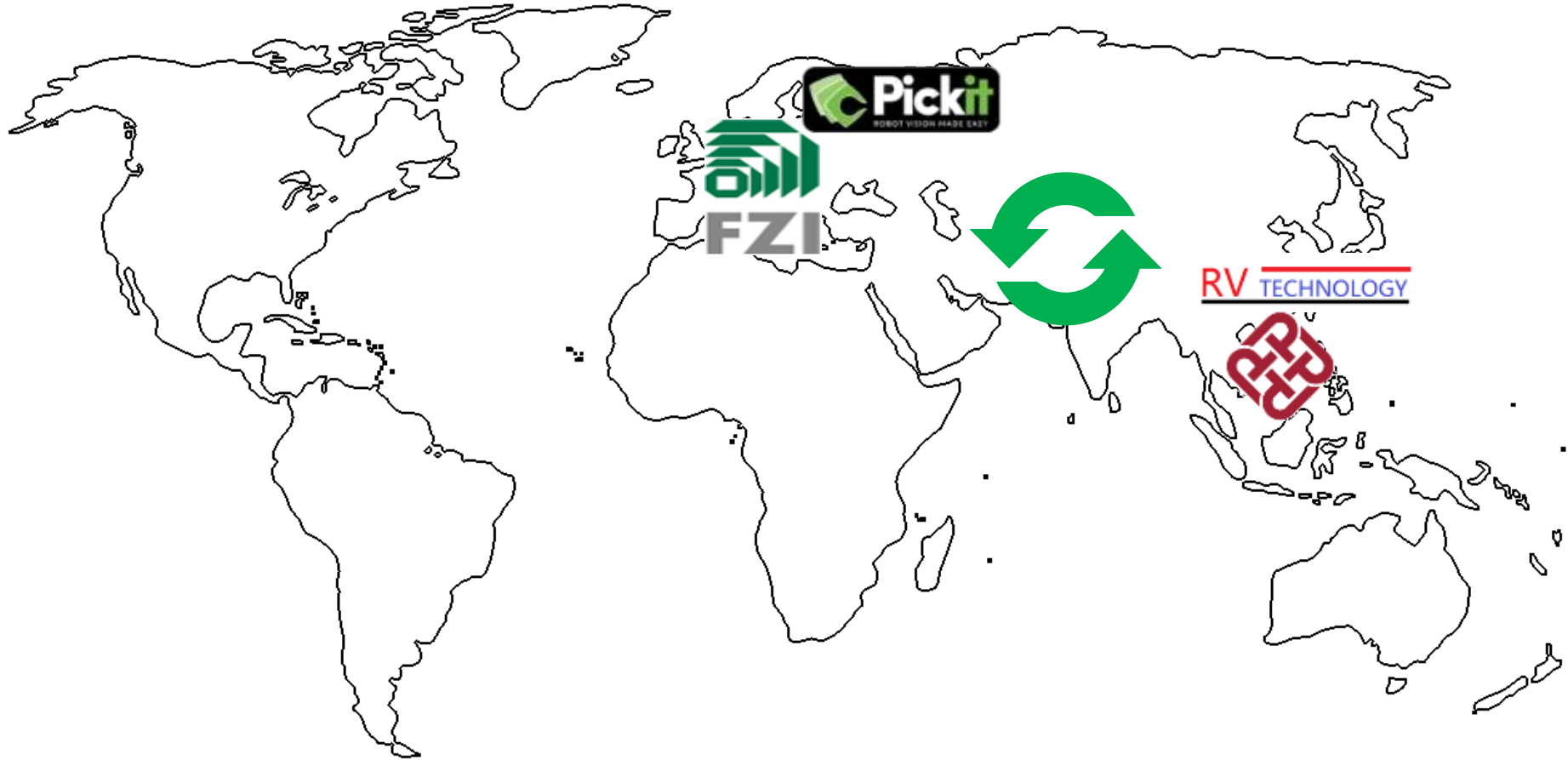
HK



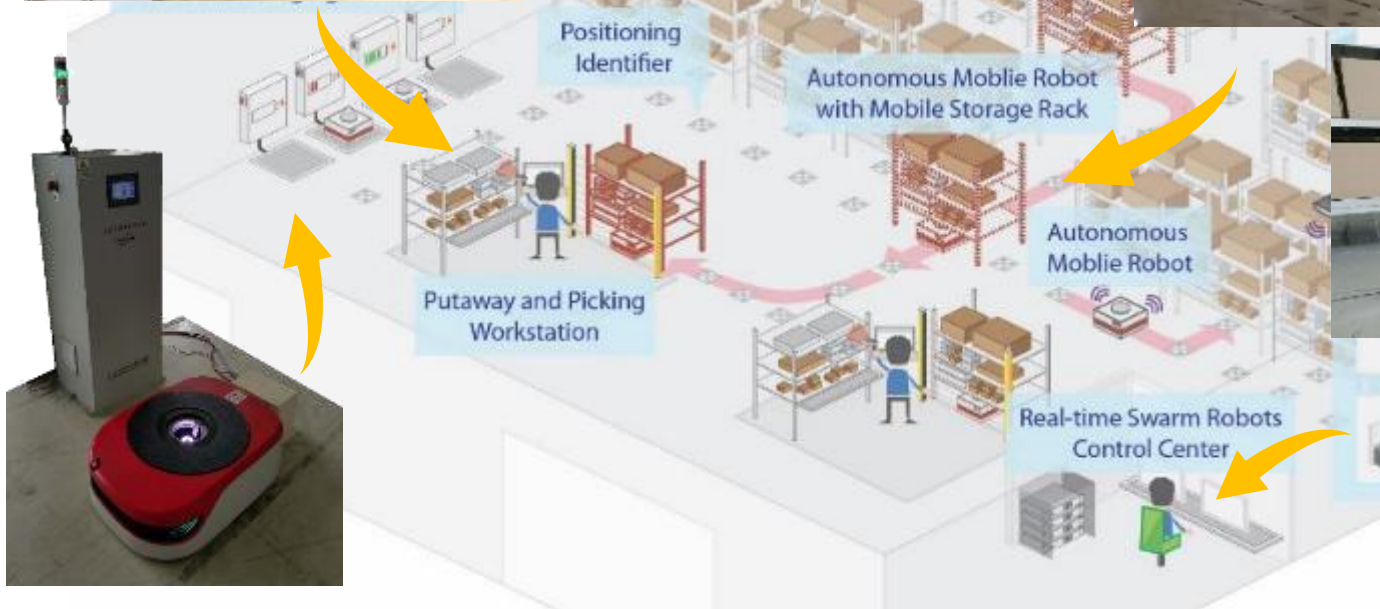


# R & D PARTNERSHIP

---



# ROBOTIC SMART WAREHOUSE SOLUTION - SWS





## Industry 4.0

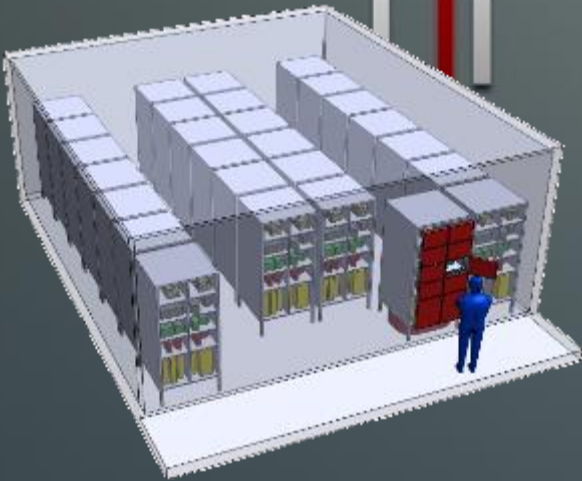
开发新世代智能自动化技术，引领亚洲进入工业4.0的阶段  
to develop the new generation of smart automated technology  
and to lead the way to industry 4.0 in Asia

**RV** TECHNOLOGY

APPLICATION

NEW GENERATION

HIGH SECURITY  
UNMANNED  
STORAGE



Some Storage requirement should be in high security control, monitoring and fully recording handling control.

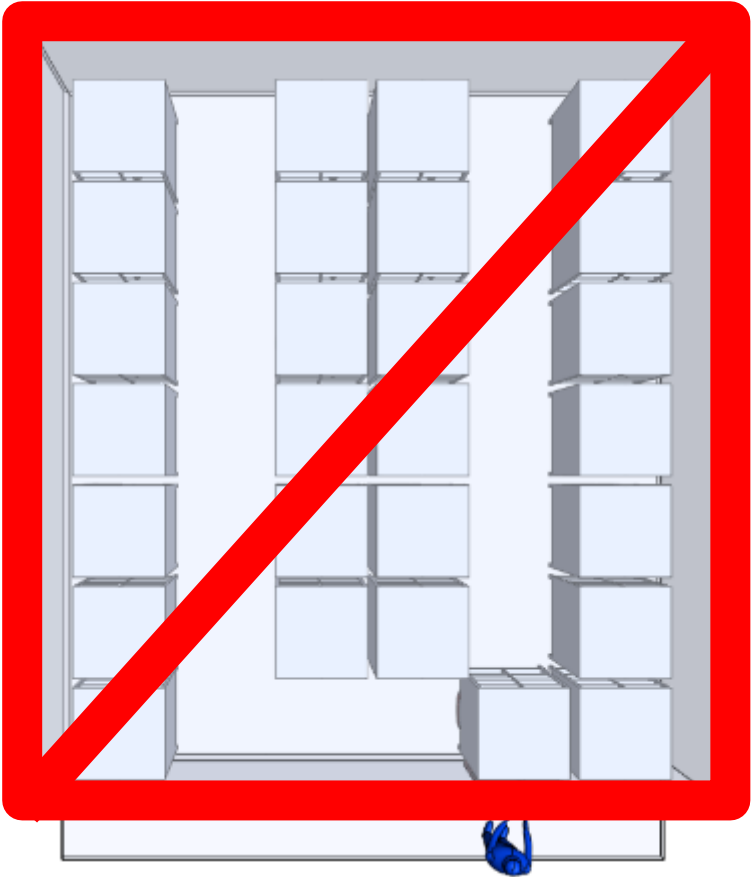
For example: Current Exhibit storage unavoidable handling by human in each process

RV provided a fully High Security unmanned Storage system, Suitable for Exhibit Storage characteristic

Through the latest unmanned storage Smart system, it can total solve the security handling issue with fully monitoring and control

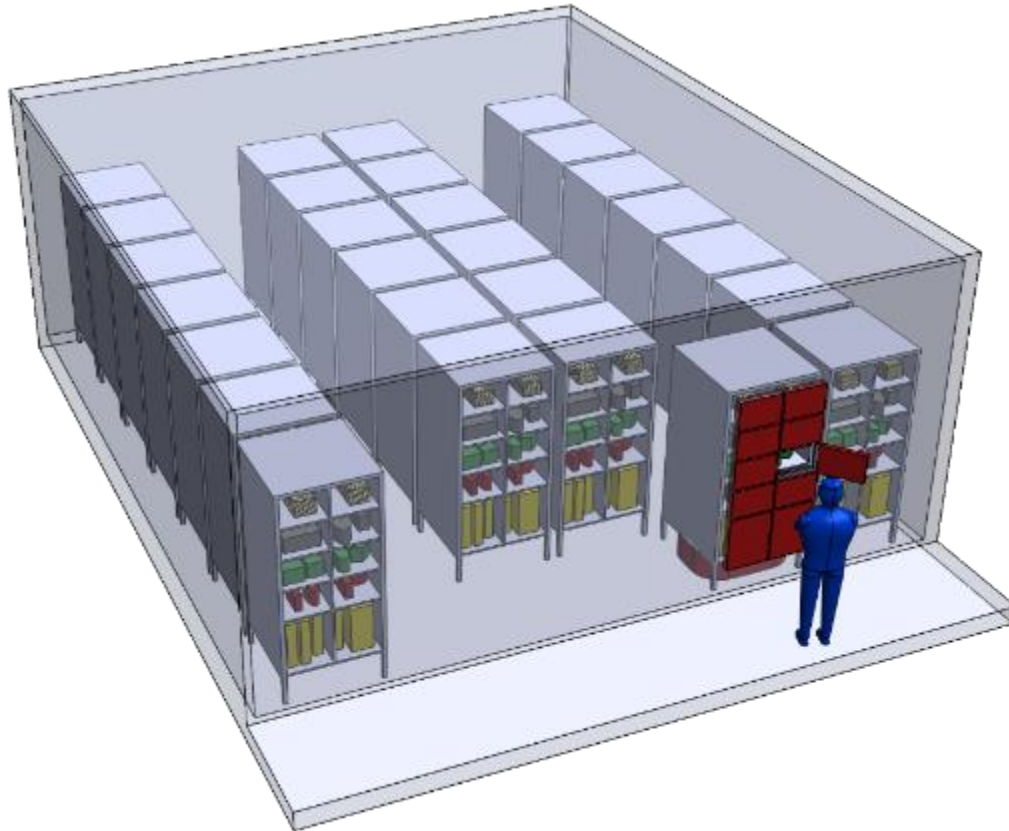
Smart Storage system with autonomous mobile robot to provide fully automated solution achieve unmanned storage zone, and automation handling system, with as less as human handling process





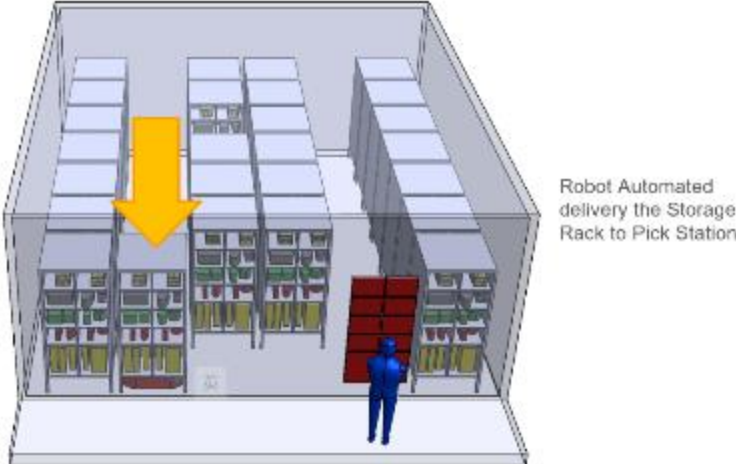
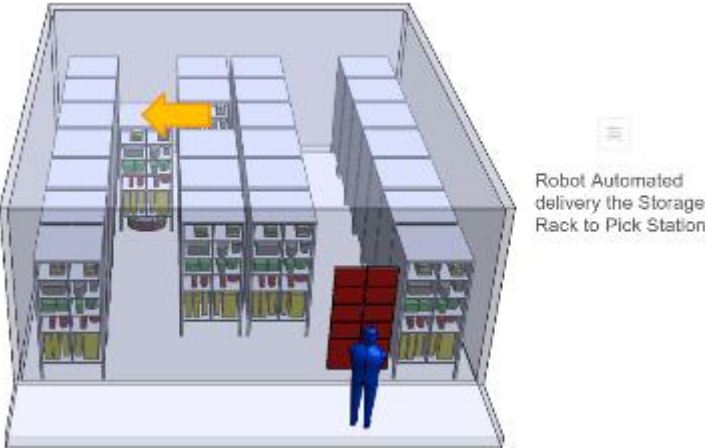
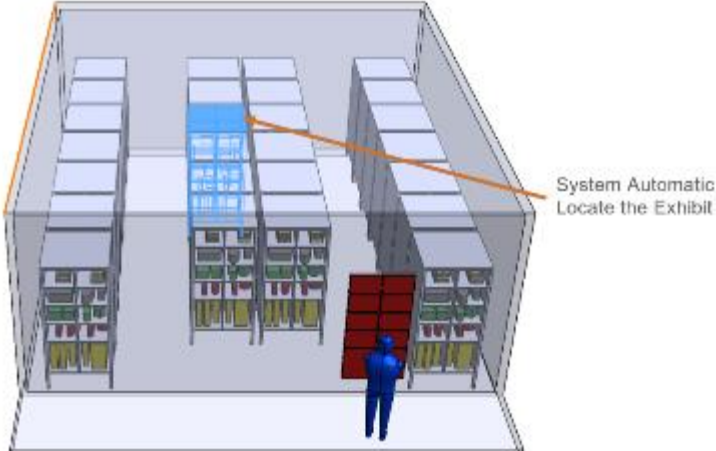
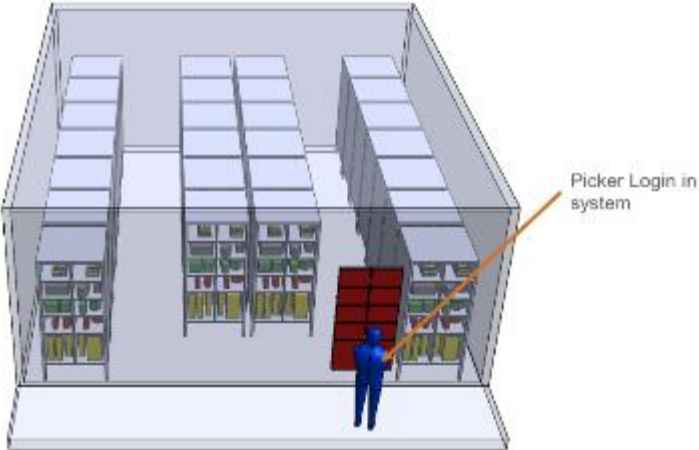
High security  
Unmanned Zone





The Picker Only can touch the Exhibit with record

# UNMANNED STORAGE

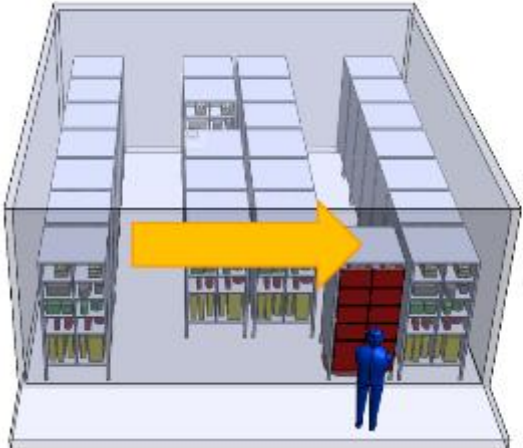




# UNMANNED STORAGE



Robot Automated delivery the Storage Rack to Pick Station



Storage Rack arrived to Pick Station

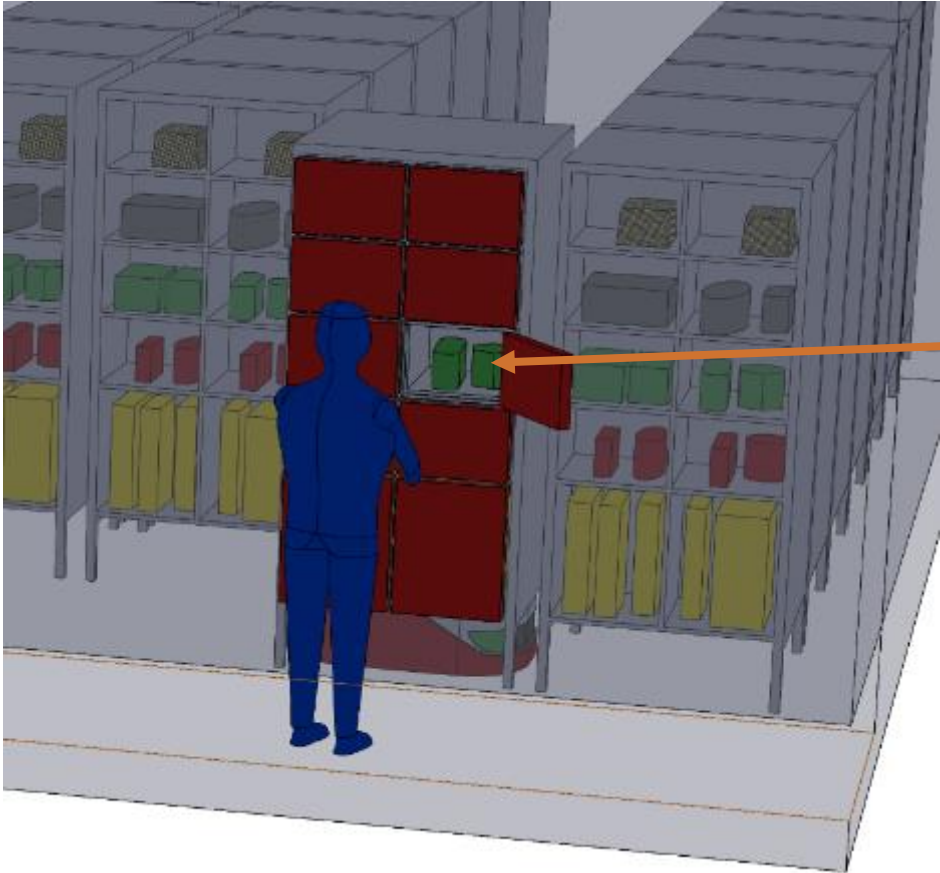


The Exhibit located on the Highlighted Red Door



Door Open automatically

# UNMANNED STORAGE




Picker Collect the Exhibit

## Highlight:

- 1, Fully Unmanned Zone
- 2, Full Record operation
- 3, ONLY Authorized Exhibit delivered
- 4, Multi Storage Size
- 5, Fully Automated
- 6, Fully Control by Customize procedure



The background of the entire image is a complex, abstract geometric pattern. It consists of numerous overlapping, concentric, and slightly offset lines that create a sense of depth and movement, resembling a digital or architectural structure. The color palette is primarily various shades of blue, from deep navy to light sky blue, with some white highlights where the lines intersect.

**NEWEST AUTONOMOUS  
MOBILE ROBOT  
TECHNOLOGY**

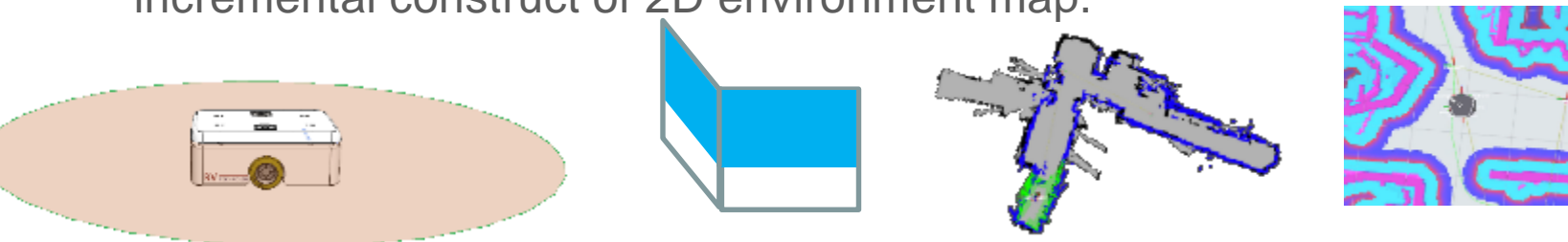
**Follow/Guide: FOLLOW ME** can Follow the Person/ Person to Follow to reach a designated location.



**Auto Return/Navigation: FOLLOW ME** through own navigation to route back to the original location. This function can be control by user panel.



**SLAM Technology:** real-time positioning and construction, especially the incremental construct of 2D environment map.



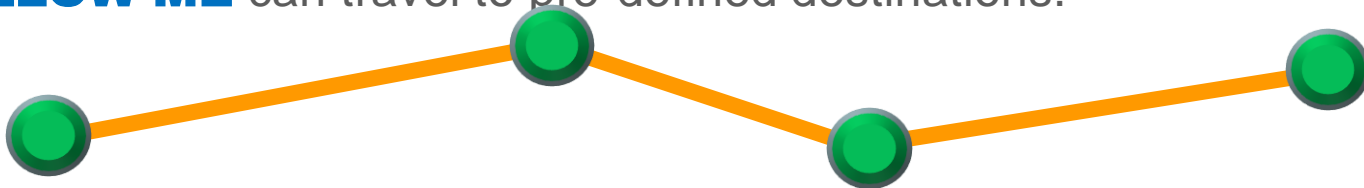
**Anti-Interference:** **FOLLOW ME** can withstand personnel interference, when someone pass between **FOLLOW ME** , and Target, it can Recognize original target.



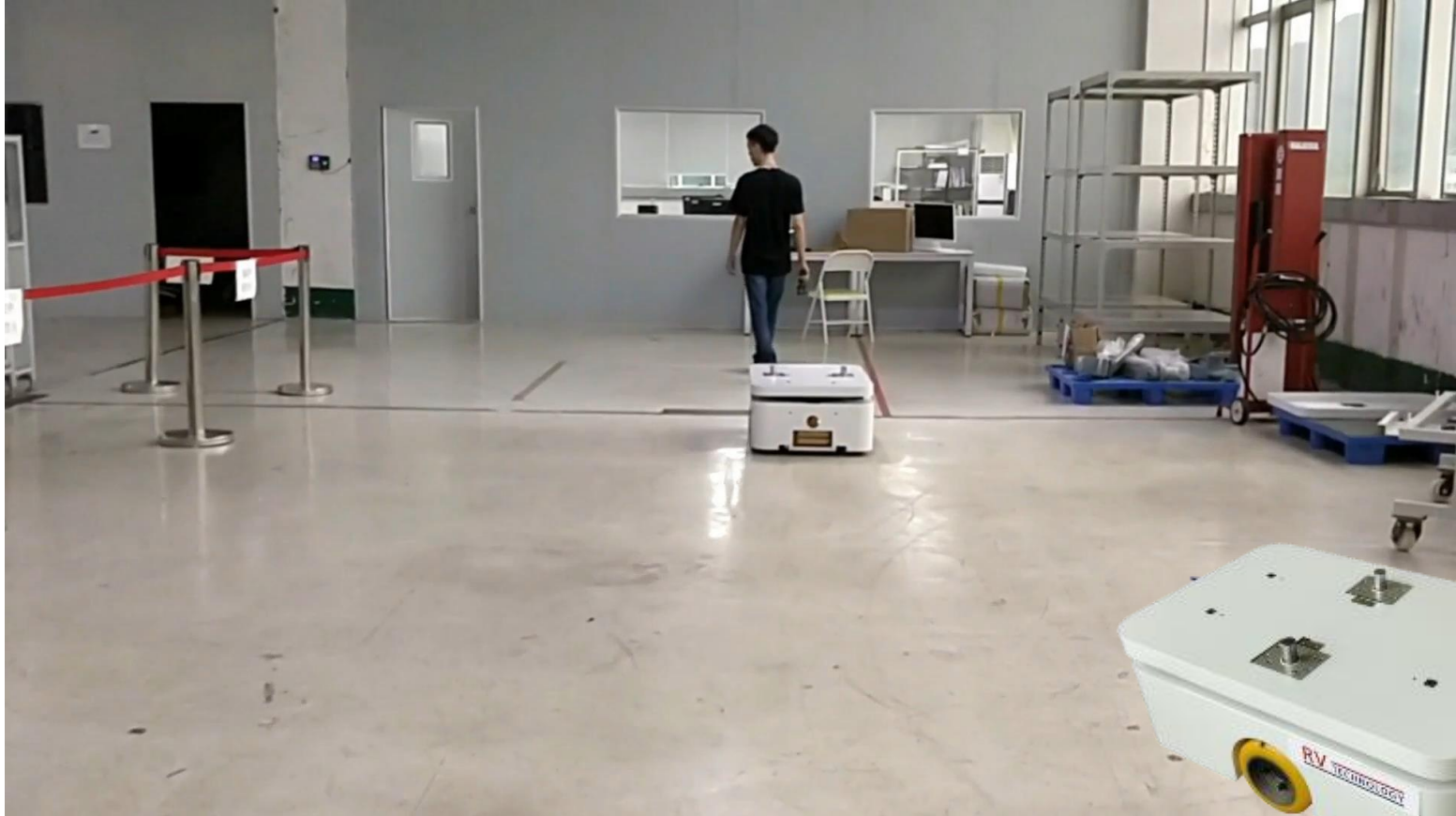
**Obstacle Avoidance:** The navigation system use 3D and 270° detection to achieve path planning and collision in an unstructured environment



**Way Point Record and Execution:** Pre-records the waypoint in a known map, **FOLLOW ME** can travel to pre-defined destinations.



# AUTONOMOUS MOBILE ROBOT (AMR) - **FOBO**



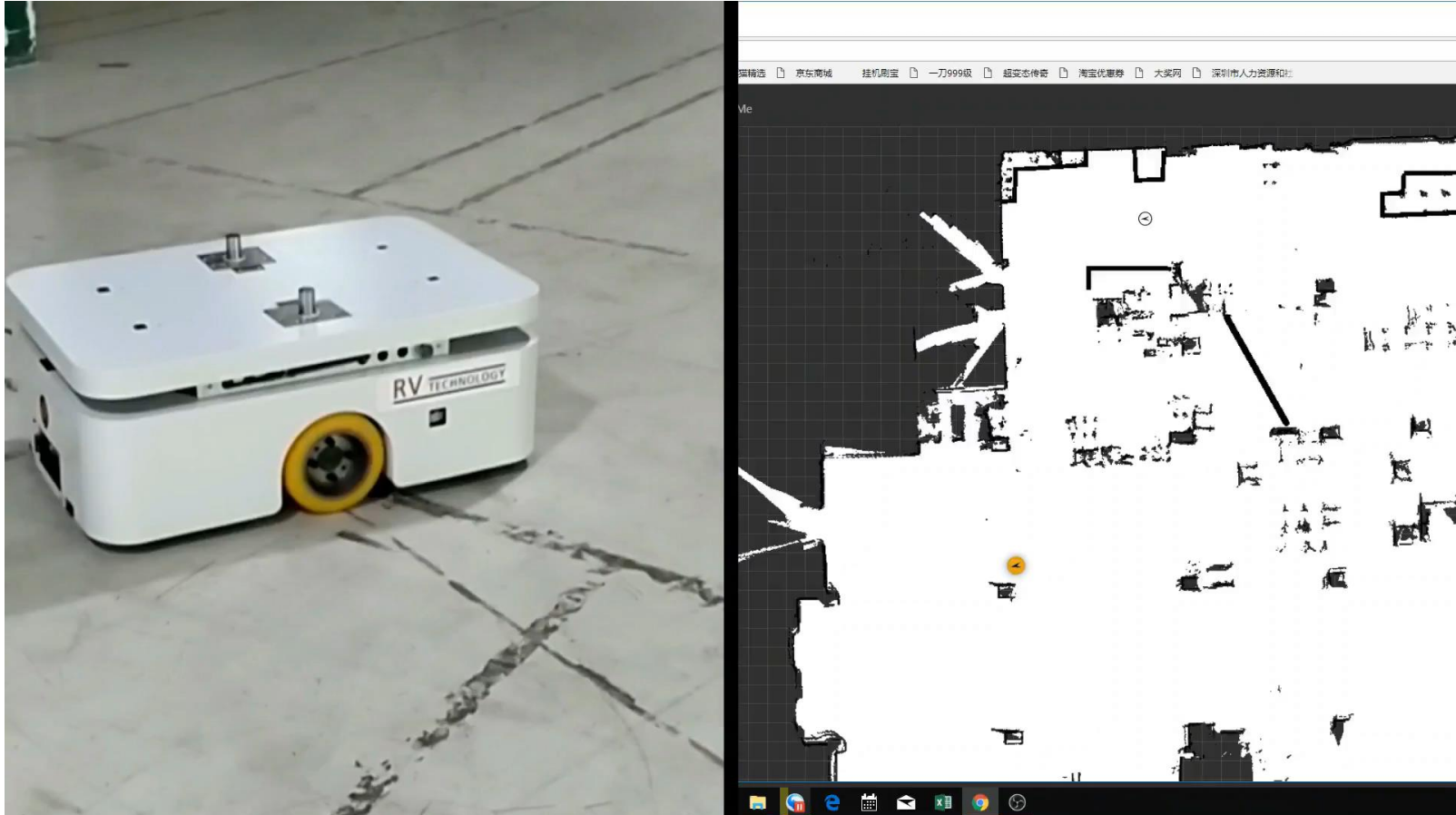
# AUTONOMOUS MOBILE ROBOT (AMR) - **FOBO**



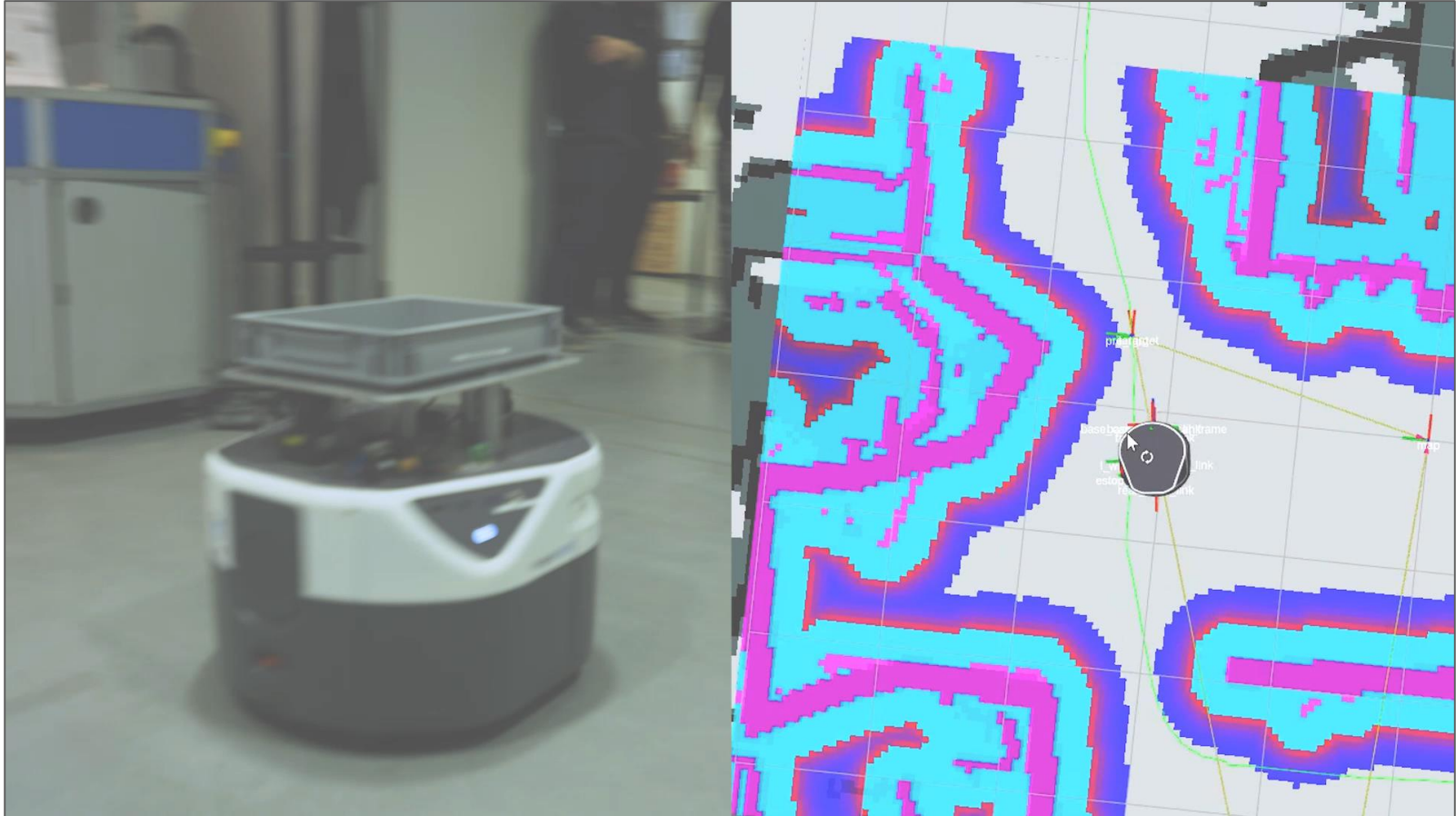
**ROBOT CANNOT ENTER RESTRICTED AREA**



# AUTONOMOUS MOBILE ROBOT (AMR) - **FOBO**



# AUTONOMOUS MOBILE ROBOT (AMR) - **FOBO**



**Wide range Application**

**Flexible extended equipment adaption**

**Fleet Management Support**



**Tour Patrol  
Robot**



**Robot Arm**



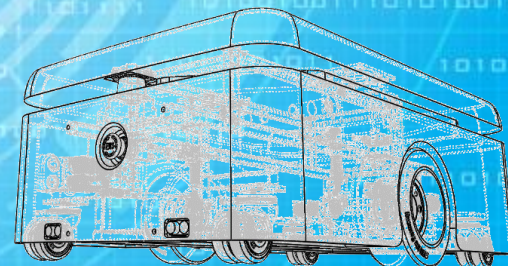
**Extended Other  
application**

機電工程署  
**EMSD**



**RV** TECHNOLOGY

APPLICATION



---

## Support Nomadic Working Mode

### **Non-Guided AMR technology:**

**Auto Return/Navigation:** **AMR** through own navigation to route back to the original location. This function can be control by user panel.

**SLAM Technology:** real-time positioning and construction, especially the incremental construct of 2D environment map.

**Obstacle Avoidance:** The navigation system use 3D and 270° detection to achieve path planning and collision in an unstructured environment

**Way Point Record and Execution:** Pre-records the waypoint in a known map, **AMR** can travel to pre-defined destinations.

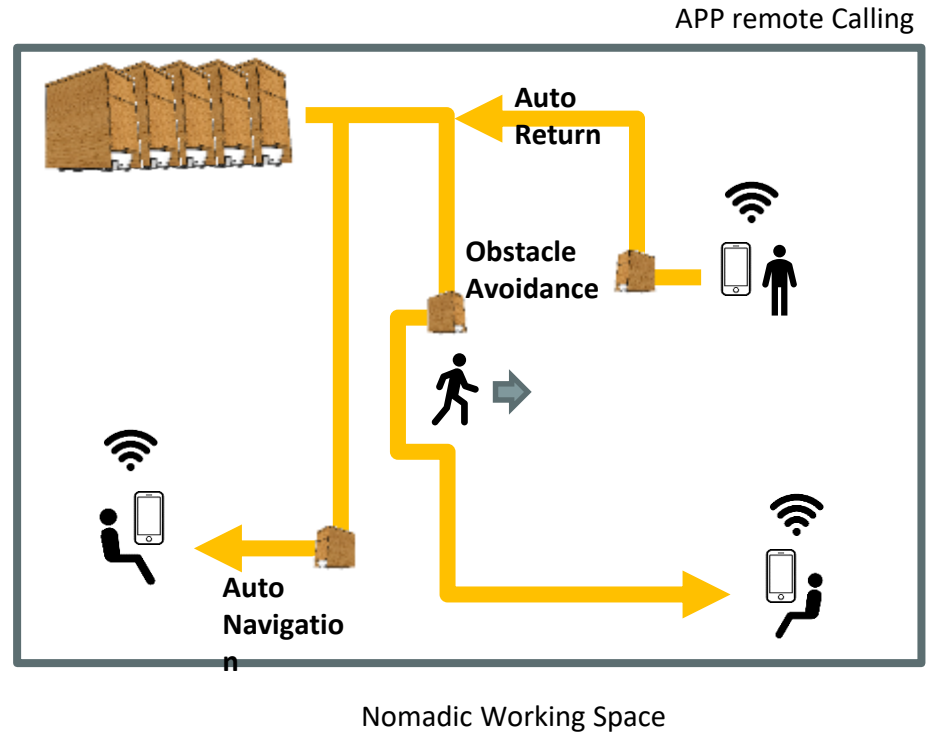
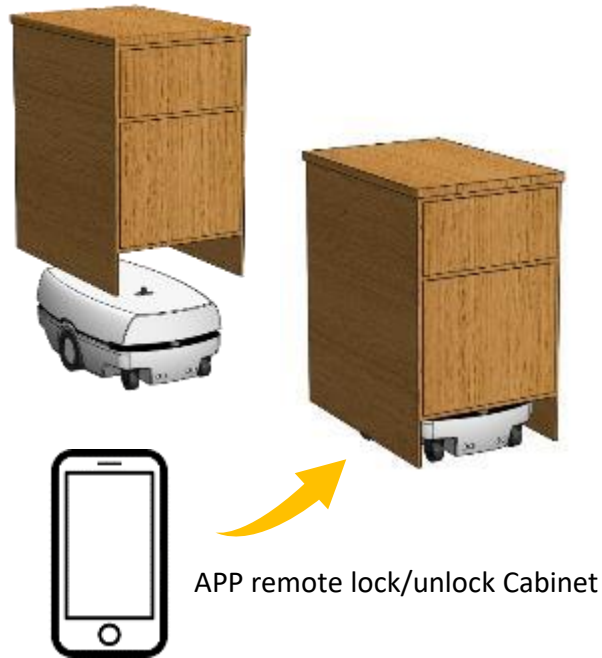
**Fleet Management:** for Multi-AMR (up to 100+) in Site

**APP Asset Management:** APP remote lock/unlock Cabinet and Central management

**Wireless Charging:** Support Wireless Charging (optional)

**Attractive Unit Pricing:**

## Support Nomadic Working Mode



## Guided Tour Working Mode

**Follow/Guide:** **FOLLOW ME AMR** can Follow the Person/ Person to Follow to reach a designated location.

**Anti-Interference:** **FOLLOW ME AMR** can withstand personnel interference, when someone pass between **FOLLOW ME AMR** , and Target, it can Recognize original target.

**Auto Routing:** **FOLLOW ME AMR** through pre-set route on site

**SLAM Technology:** real-time positioning and construction, especially the incremental construct of 2D environment map.

**Obstacle Avoidance:** The navigation system use 3D and 270° detection to achieve path planning and collision in an unstructured environment

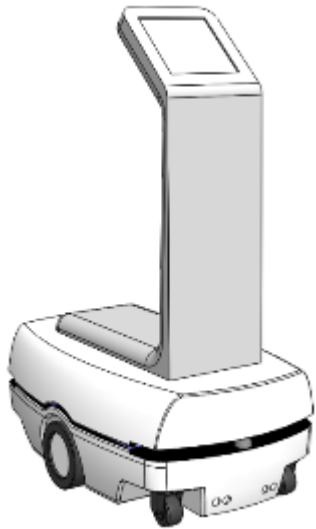
**Way Point Record and Execution:** Pre-records the waypoint in a known map, **AMR** can travel to pre-defined destinations.

**Wireless Charging:** Support Wireless Charging (optional)

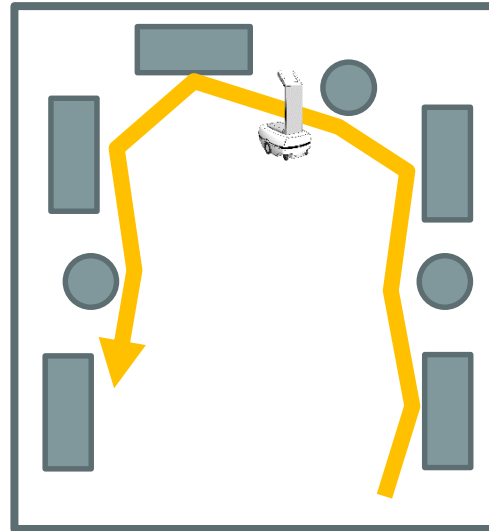
**APP control:**



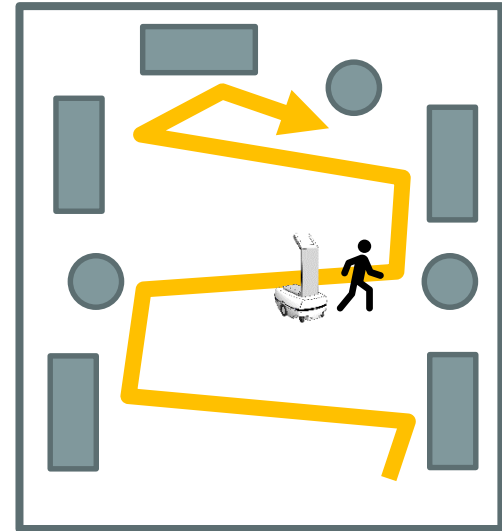
## Guided Tour Working Mode



**Auto Route Mode (fix Route)**



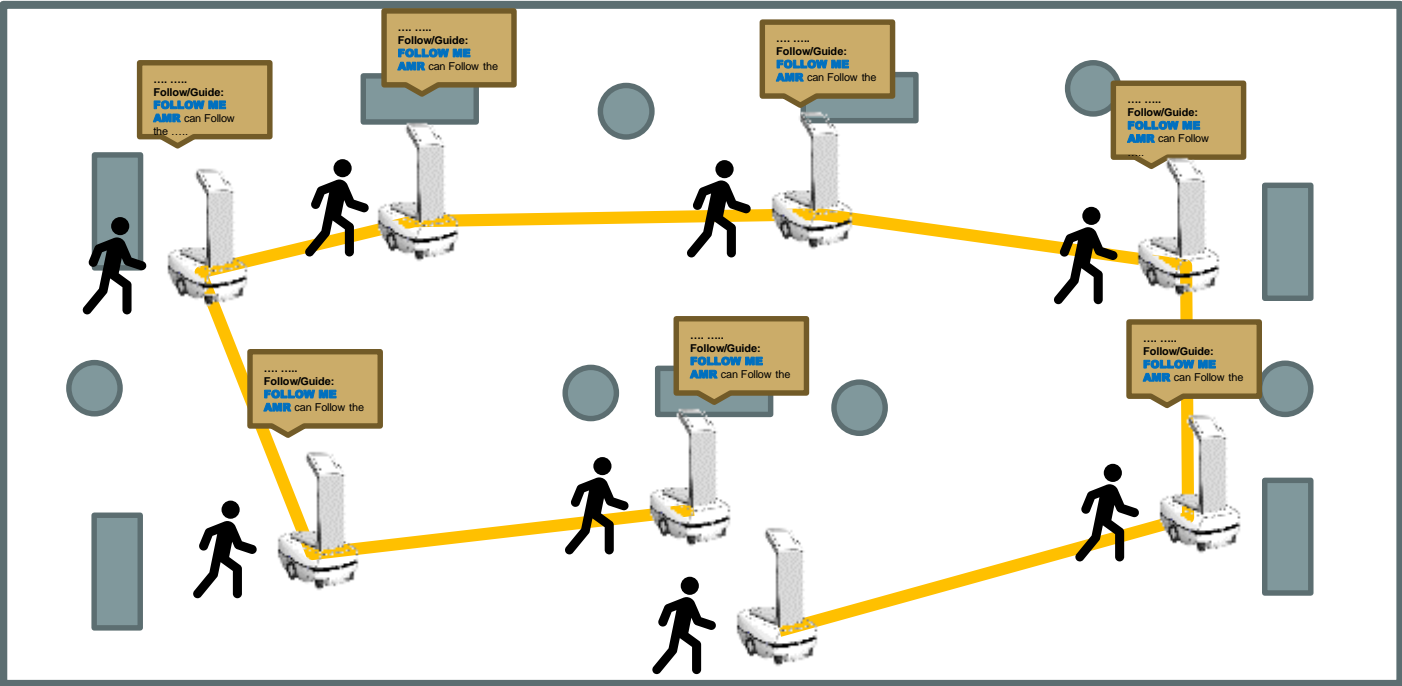
**Follow Guest Mode (Flex Route by Follow Guest)**





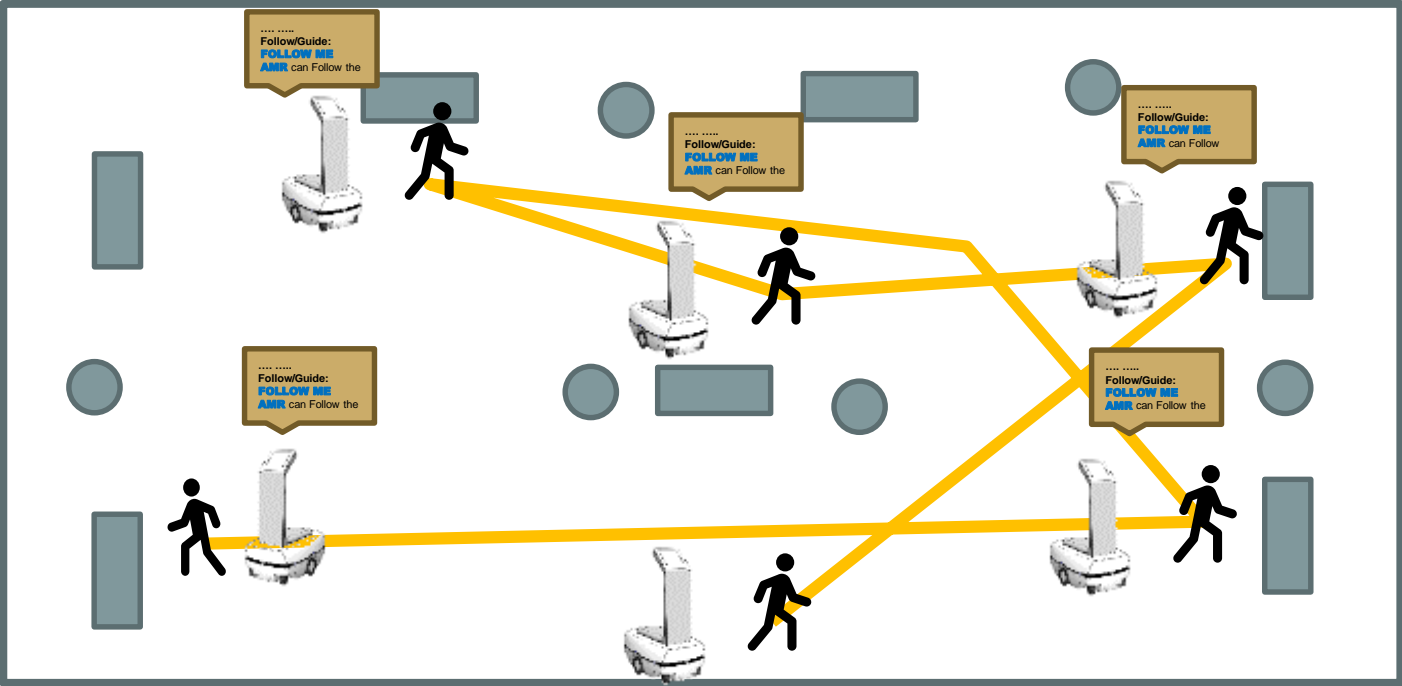
## Guided Tour Working Mode

Auto Route Mode (fix Route)

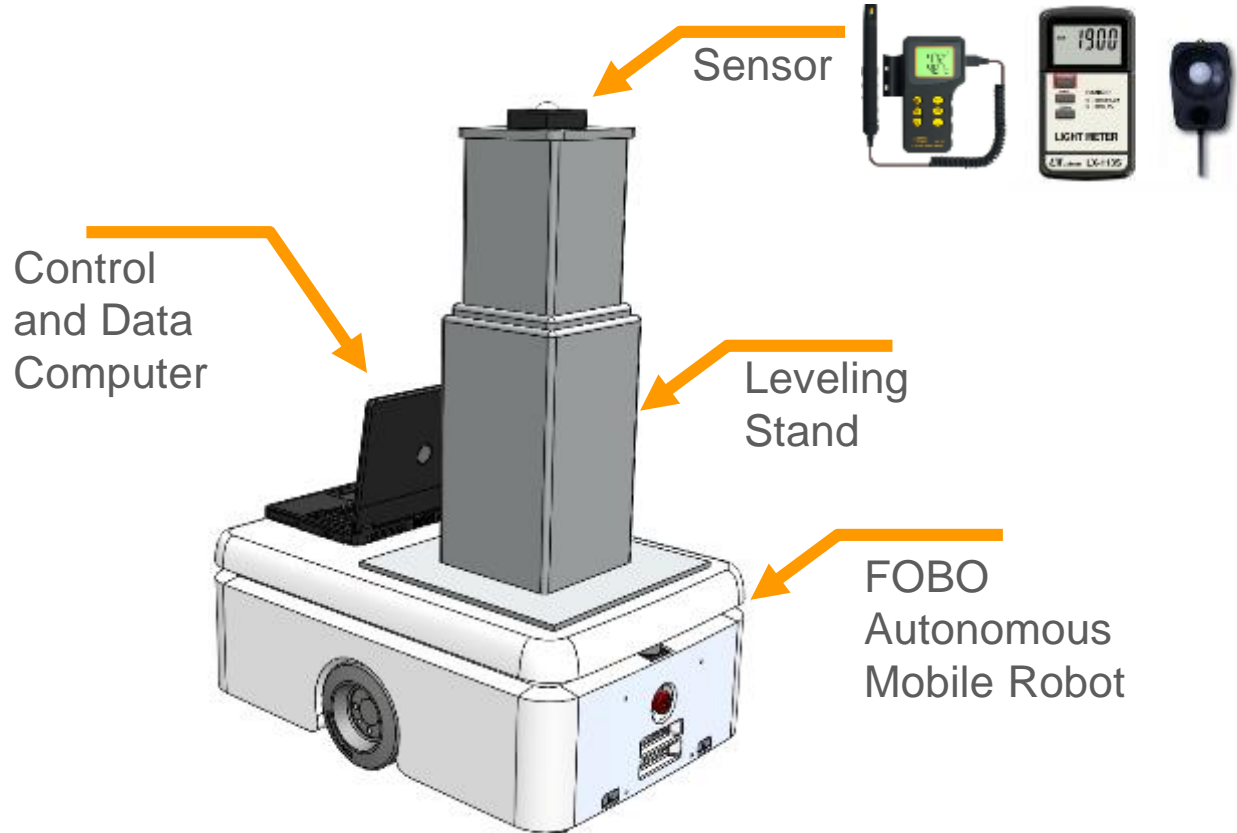


# Guided Tour Working Mode

Follow Guest Mode (Flex Route by Follow Guest)



## INSPECTION MEASURE ROBOT



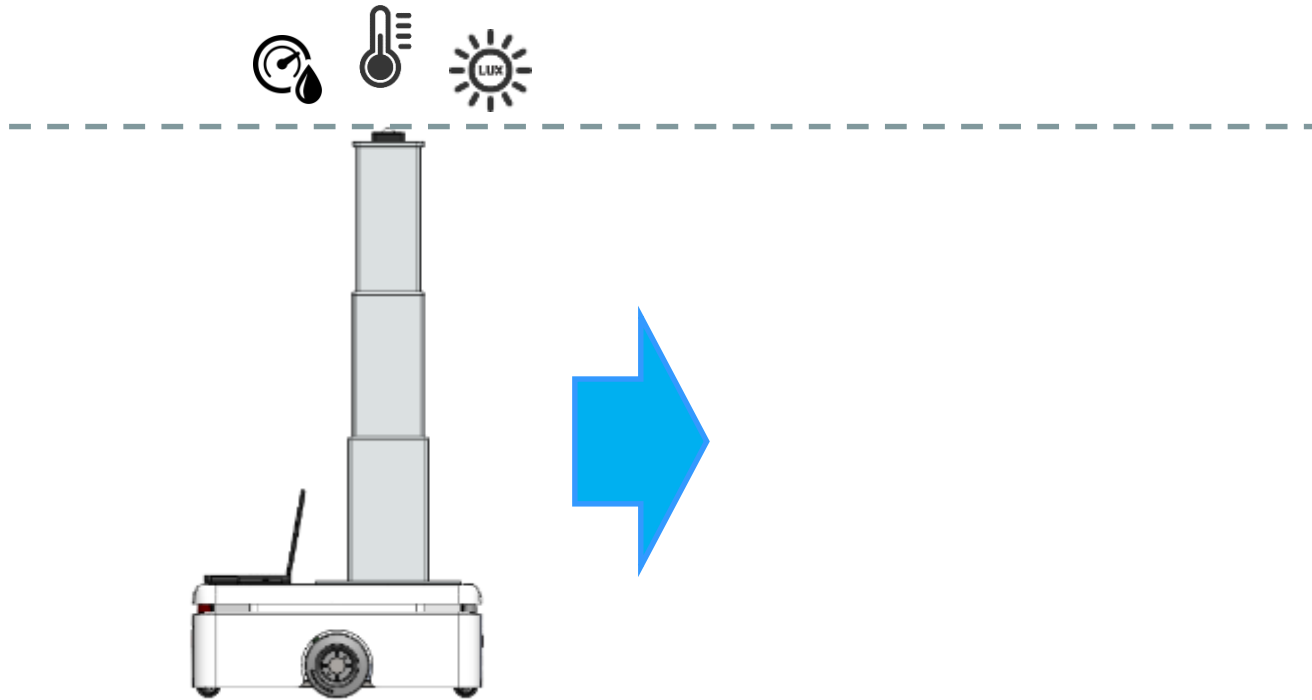
**ROBOT-ROUTING**



# AUTONOMOUS MOBILE ROBOT

---

## DATA COLLECTION



System Cab Create mapping Result and Excel table

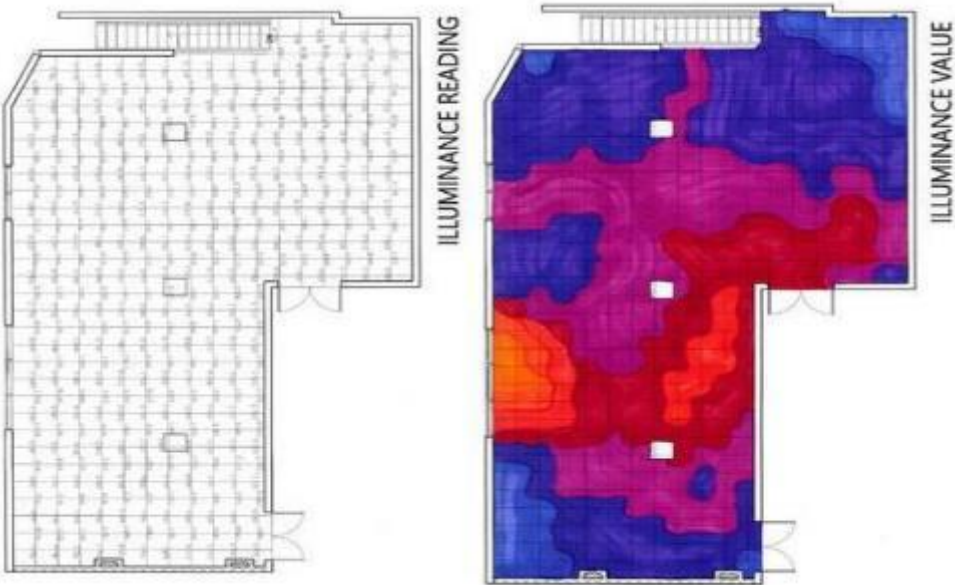


 **GROUND FLOOR LUX MEASUREMENT RESULTS**

# REPORT

Due to Data can be fast measurement, it can add additional measure point between target target, and create value added Result Mapping Result

Example:



Alarm warning  
when ad-  
normal result  
situation

NEW GENERATION

**SMART/ROBOTIC  
WHEELCHAIR**





# WHEELCHAIR HISTORY

---

MANUAL WHEELCHAIR



1930s

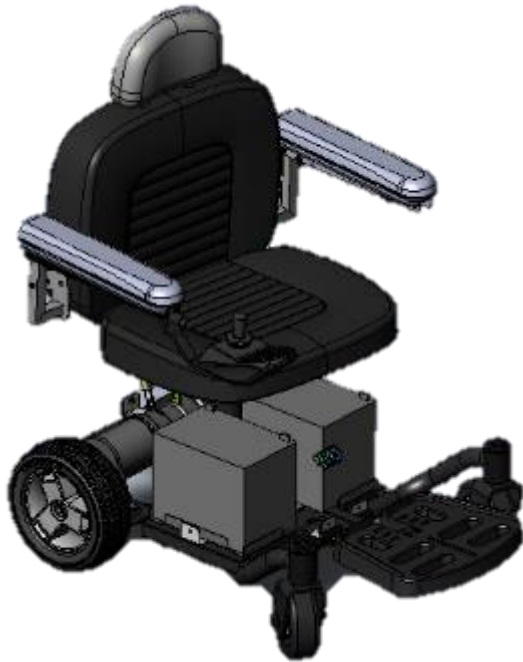
ELECTRONIC WHEELCHAIR



2010s



## SMART/ROBOTIC WHEELCHAIR



- 360 degree Joystick Manual Control
- SLAM Technology/Auto-Navigation
- Obstacle Avoidance
- Advance Follow Me Feature
- Anti-Interference
- APP – Remote Control/Calling
- Auto Charging
- Wireless Charging
- Support Fleet Management



# NEW GENERATION WHEELCHAIR

FULLY INTEGRATED WITH FOBO AND  
ELECTRONIC WHEELCHAIR



## ADVANCE FOLLOW FEATURE

**FOLLOW ME feature** let Smart Wheelchair can Follow the Person/ Person to Follow to reach a designated location.



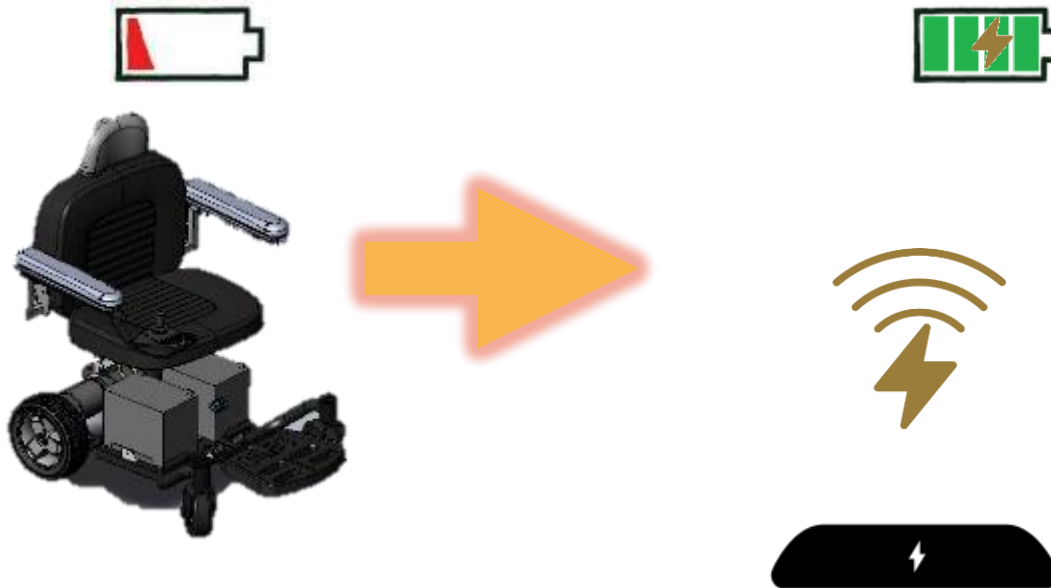
## MOBILE REMOTE

**Mobile device Remote:** Smart Wheelchair can call by mobile device, and defined the destination

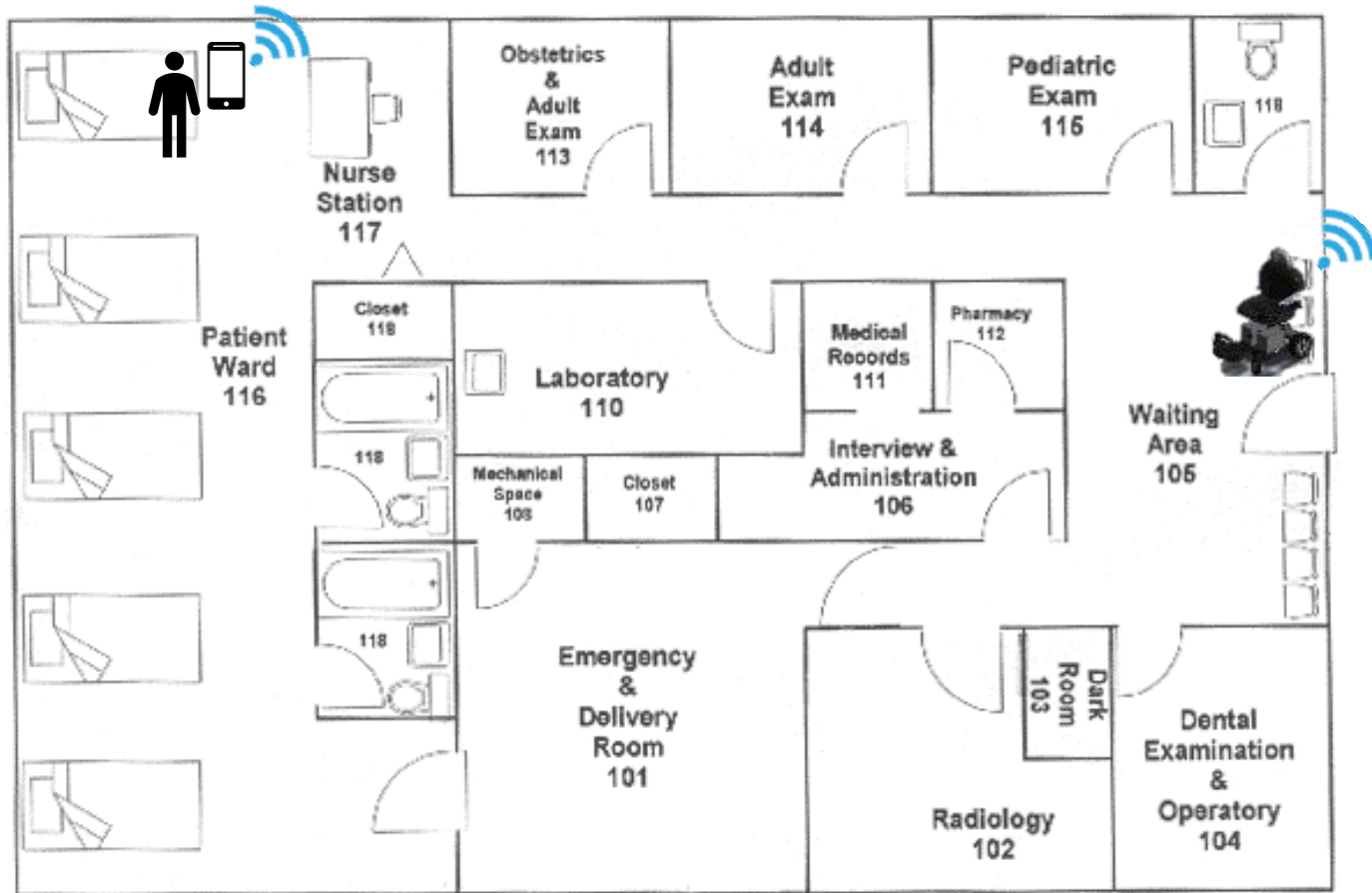


## CHARGING

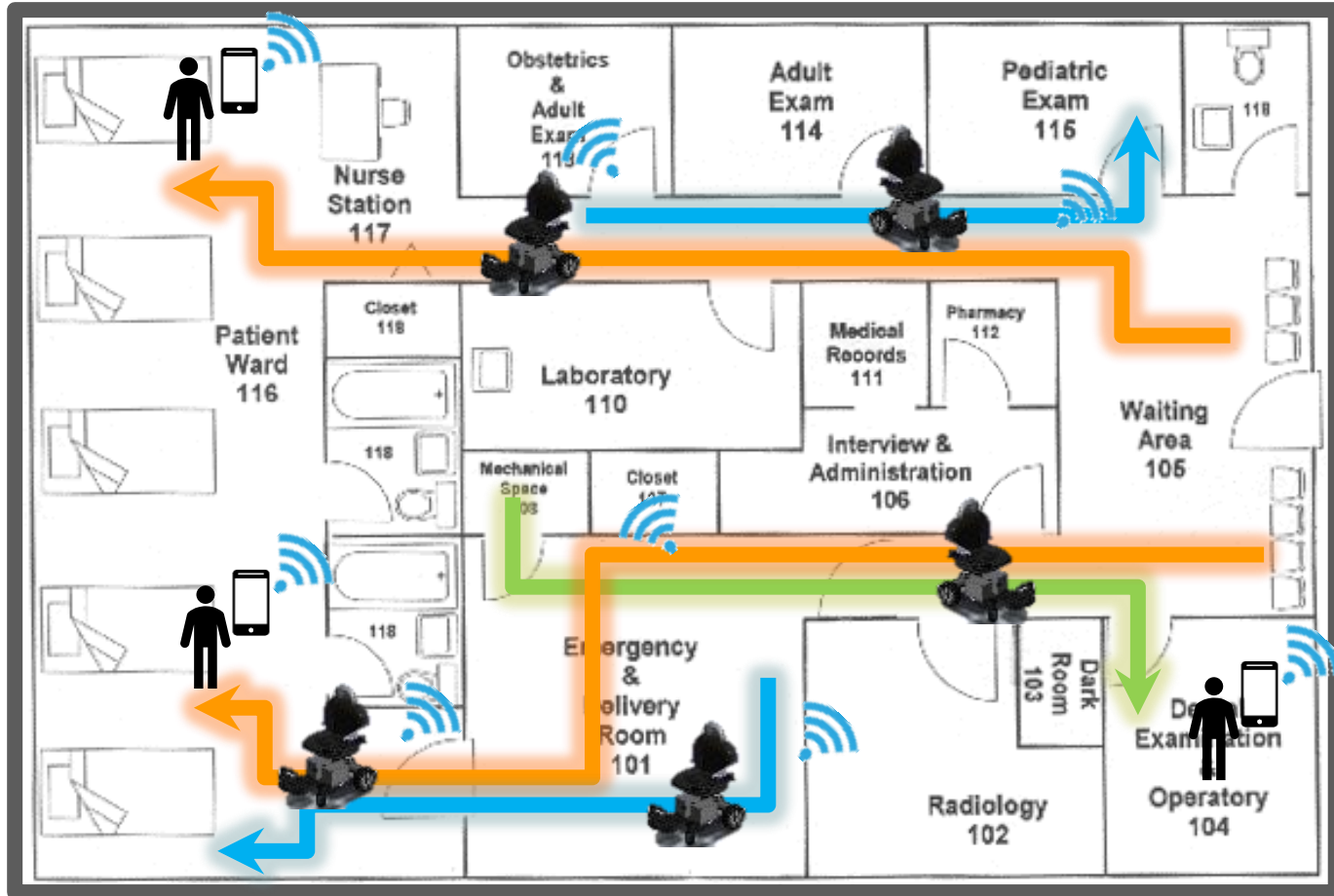
**Auto-Charging:** Smart Wheelchair Support  
Auto-Charging with Power management



# NEW GENERATION WHEELCHAIR - APPLICATION EXAMPLE



# NEW GENERATION WHEELCHAIR -







Patrol Robot

Floor Cleaning Robot

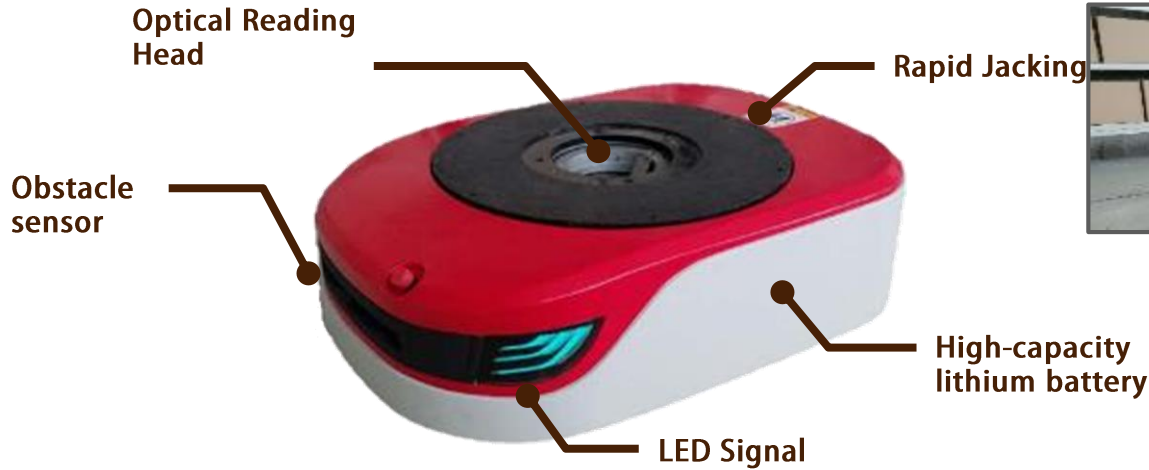
.....

.....

**Welcome to Input**

**RV** TECHNOLOGY

# NEW GENERATION ROBOTIC SMART WAREHOUSE



- 2D LIDAR Sensor
- Optical Reading Head
- Lithium rechargeable battery
- Motor - China High Speed Train Motor Provider



# PICKING & PUT-AWAY STATION

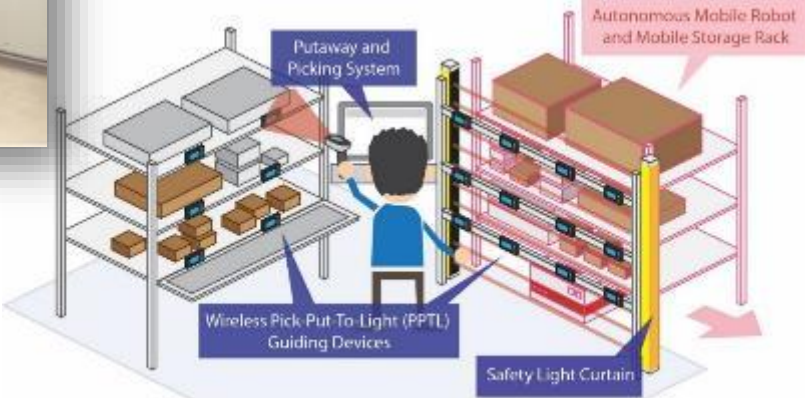
## Pick/Put to Light Workstation Customization for Client



Safety Curtain

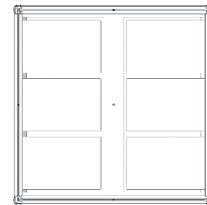
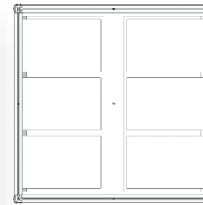
Pick/Put to LED Light

Pick/Put to LED Light with Qty Display



# STORAGE RACK

Storage Rack Customization for Client's requirement



1M



2.2M

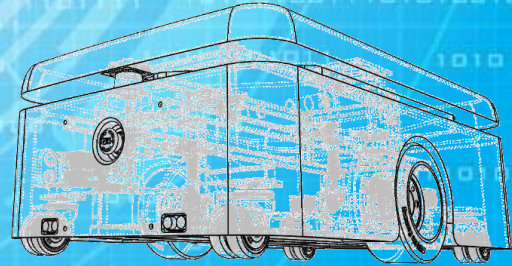
000101

機電工程署  
**EMSD**



**RV** TECHNOLOGY

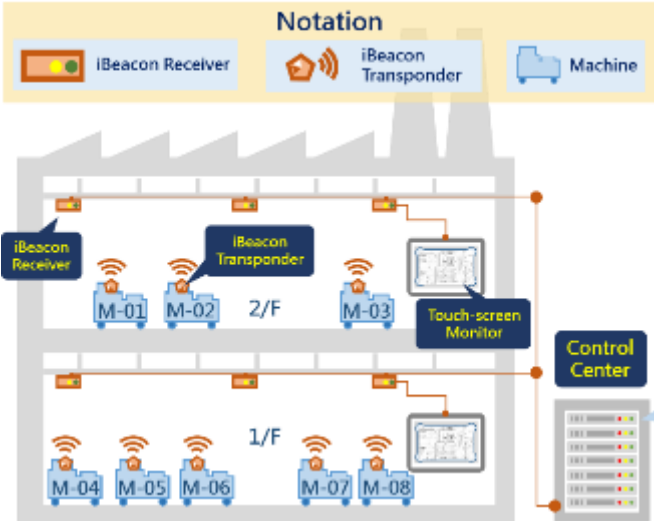
**OTHER SOLUTION**



# ROBOTIC 3D VISION



# IOT ASSET MANAGEMENT SOLUTION



Integrated I4.0 and IOT Technology



機電工程署  
EMSD



RV TECHNOLOGY

THANKS

[riochau@rvautotech.com](mailto:riochau@rvautotech.com)  
[stanleyho@rvautotech.com](mailto:stanleyho@rvautotech.com)

