

# Collaborating to drive Innovation and Technology - an EMSD Experience



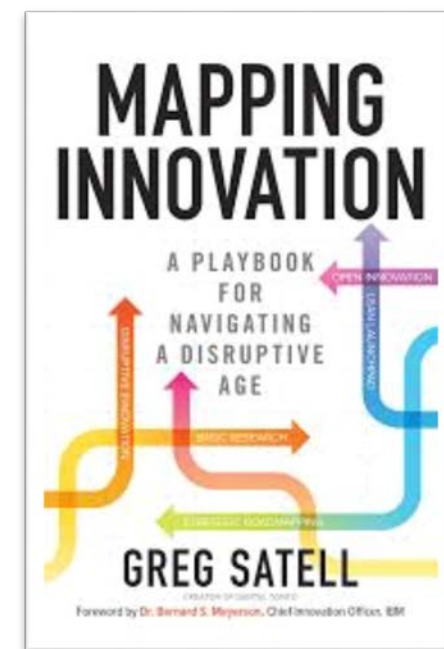
Mr. Richard CHAN  
Assistant Director/ 3  
Electrical and Mechanical Services Department  
28 April 2018

## Need for Collaboration

Greg Satell said:

*“... in the years to come the pendulum is likely to swing from applications back to the fundamental technologies that make them possible.”*

*“We’ll also need to create a new breed of innovative organization, which integrates the efforts of **government agencies, academic institutions and private companies.**”*





## 八大方向推創科發展

- 研發資源
- 匯聚人才
- 提供資金
- 科研基建
- 檢視法例
- 開放數據
- 政府採購
- 科普教育



### 智慧城市

投放7億推展協助發展智慧城市的重要基礎建設項目

為所有香港居民提供數碼個人身分

在選定市區地點進行多功能智慧燈柱試驗計劃

革新電子政府系統的開發技術及設立大數據分析平台

2017年施政報告

GOV



- Smart Mobility
- Smart Living
- Smart Environment
- Smart People
- Smart Government
- Smart Economy



Smart  
Mobility



Smart  
Living



Smart  
Environment



Smart  
People



Smart  
Government



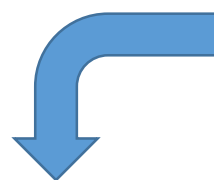
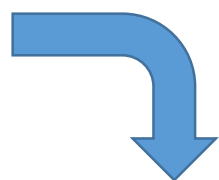
Smart  
Economy



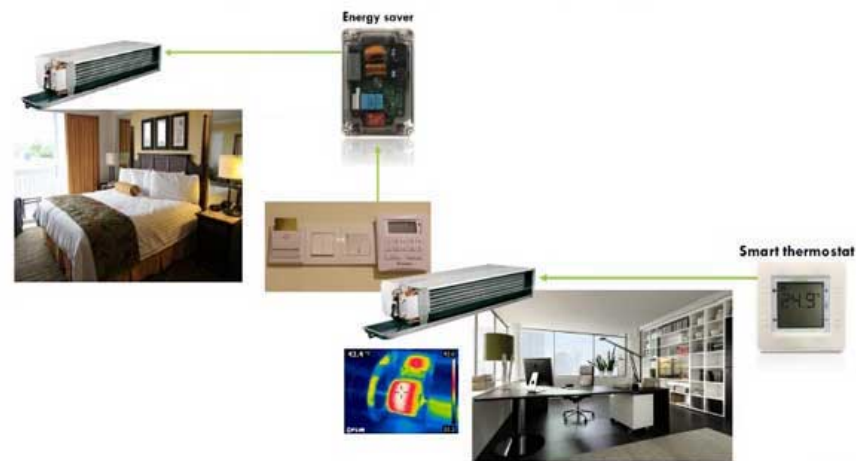
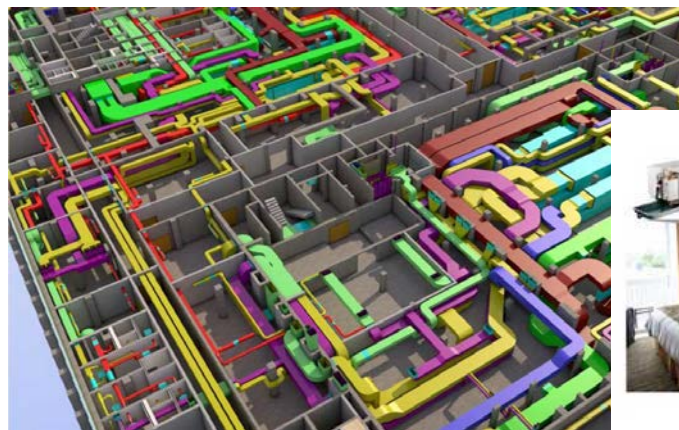


## Collaboration with University

機電工程署  
**EMSD**



Smart Real-time Battery State and Health Diagnostics System at Siu Ho Wan Data Center





## Collaboration with Trade

機電工程署  
**EMSD**



**HKSTP**  
香港科技園

數碼港  
**Cyberport**

**HKPC**

**INVOTECH™**  
創科滙



Innovative Technology Day

## A photograph of the University of Tsukuba building, a modern structure with a large glass facade and a prominent blue arrow pointing towards the entrance. The building features a large, dark, angular overhang and a central section with a grid-like facade. The entrance is a wide, glass-enclosed area with a canopy. Several people are visible walking on the paved plaza in front of the building. The sky is blue with some clouds.





## Online Collaboration Platform – E&M InnoPortal





## I&T Solutions

We have been actively supporting the development of Electrical and Mechanical (E&M) start-ups to turn their research and development projects into products for launching in the market. The EMSD...

[See More](#)



## I&T Wish List

This platform maintain a list of the technology development needs ("I&T Wish List") of various government departments, public bodies and the Electrical and Mechanical (E&M) trade. On the oth...

[See More](#)



## Success Cases

We will provide venues for trial of suitable projects, conduct prototype testing and pilot project in a collaborative way, and upload validated performance reports of trial cases to the platform for sharing wit...

[See More](#)

## Collaboration Case

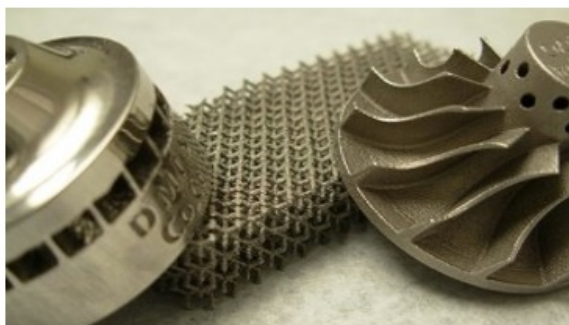
### ● Unmanned Aerial Vehicles for Inspection of E&M Installations





## Collaboration Case

### ●3D Printing for E&M Equipment Enhancement Work



## Collaboration Case

### ●Thermostat Integrated Smart Controller for Fan Coil Units



## Organizational Change

### Inno-Office



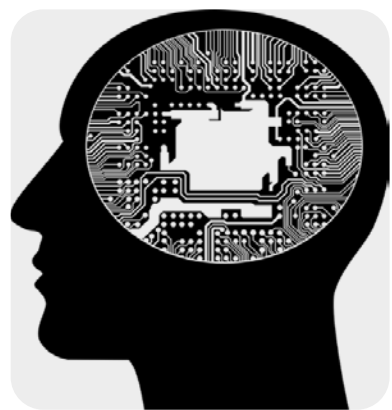
### Inno-Teams



### Inno-SandBox







Government

Collaboration

University

Industry



To Connect  
To Share  
To Co-Create



<https://www.emsd.gov.hk/inno>



# Thank You