



YunHorn Technology
Shenzhen Bay, China



Smart Washroom Management System

SmarToilets®

A series of orange decorative lines at the bottom right, consisting of a long row of thin parallel lines followed by four thick parallel diagonal lines.

Shenzhen Yunhorn Technology Co., Ltd.

Value Proposition, A Best Practice of Smart City over IoT

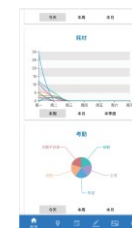
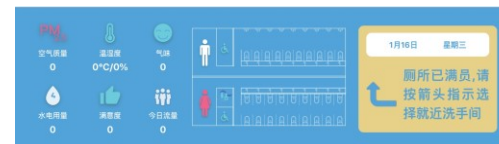
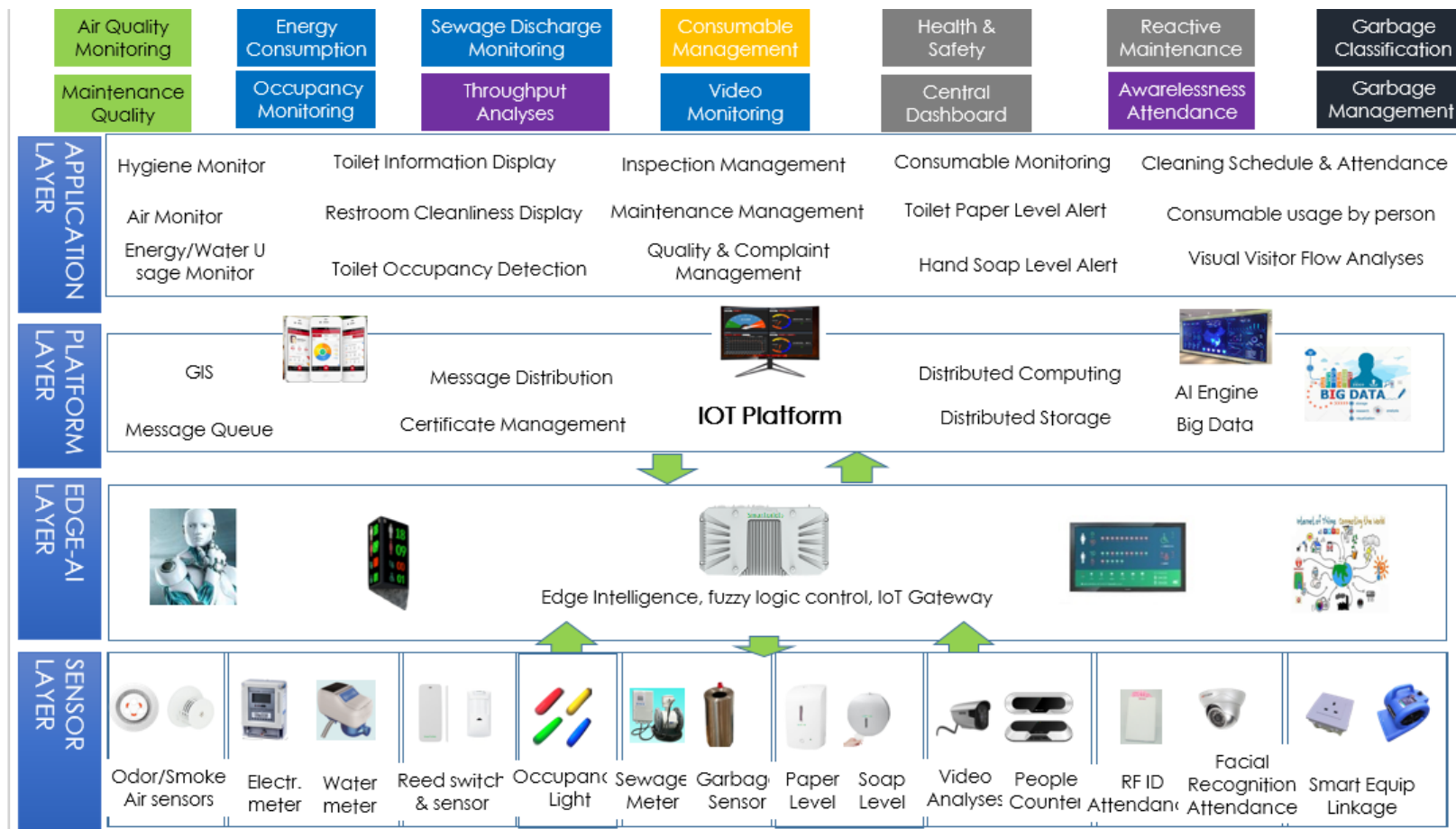
- ❑ Manage manpower, time cards
- ❑ Schedule equipment repairs, consumable inventories and replenishments
- ❑ Timely Alerts cleaners for specific restrooms with clear service rules and frequencies.



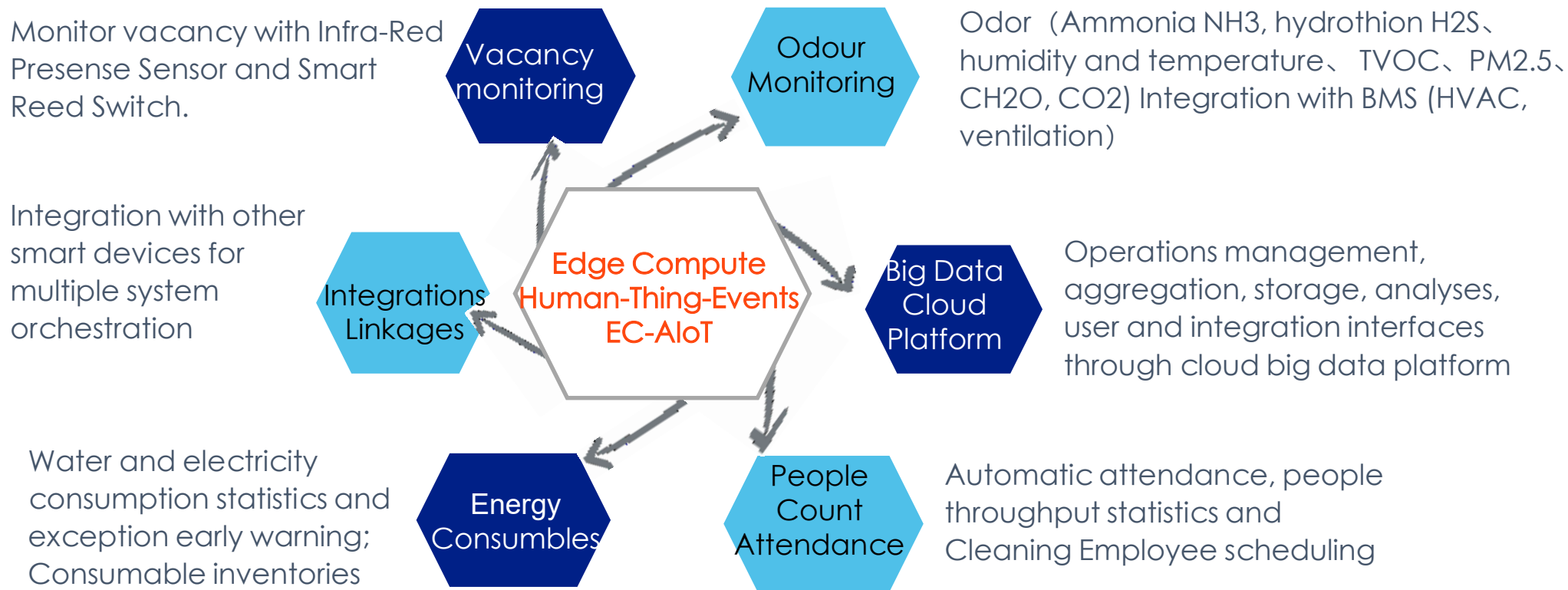
- ❑ Offer clean and sterile restroom services through visual display of public restroom locations, their clean indexes, usage statistics and direction/route to the restrooms on the map

- ❑ Provide data to measure quality of services.
- ❑ Quantify consumable management, energy consumption with benchmarking towards high maintenance quality

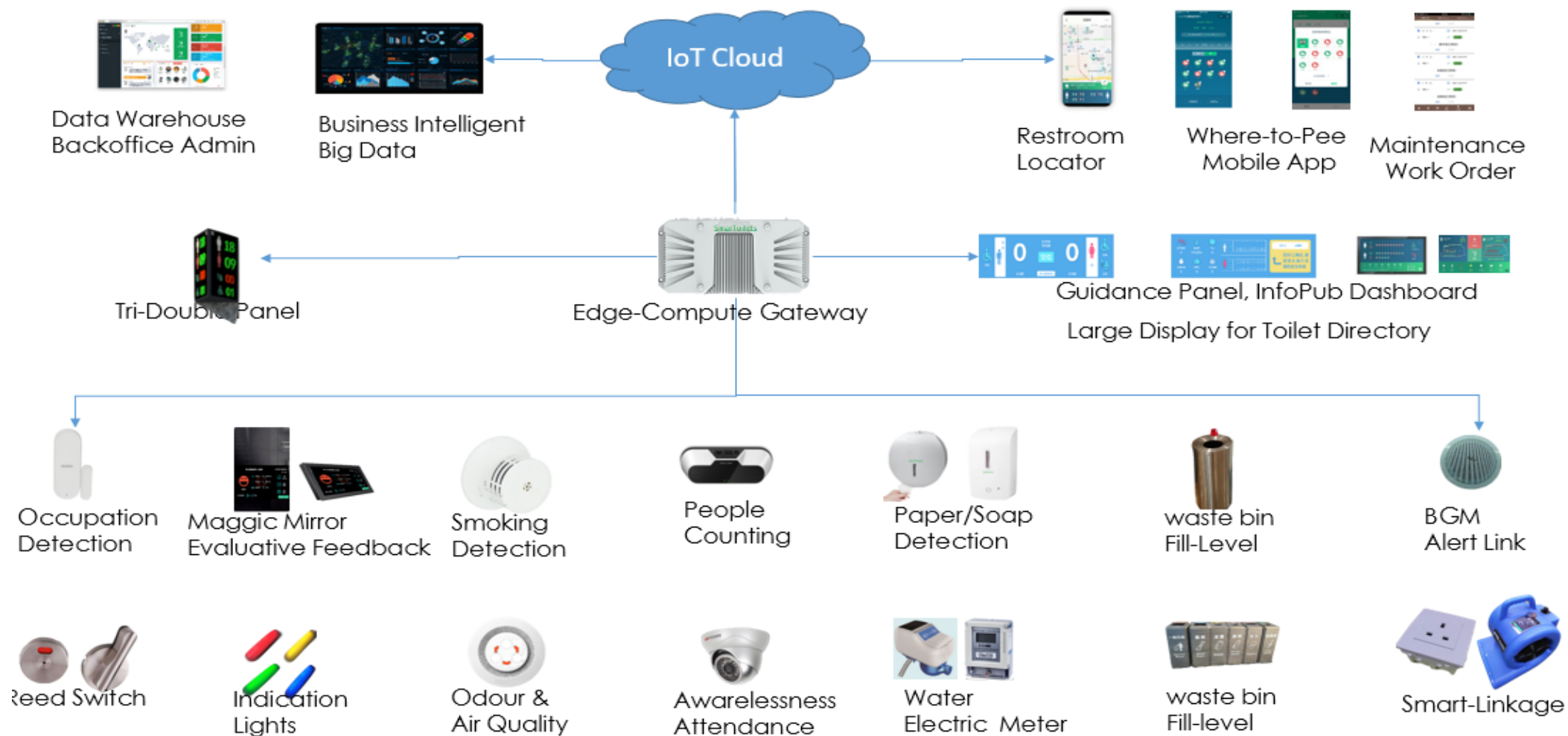
Business Architecture



Functionalities, Driven By EC-AIoT & Big Data



SmarToilets® System Architecture



Public Washroom Cleaning management Solution



Quality Control & Monitoring

It is not feasible to periodically and physically monitor the cleanliness of the facility by FM supervisors. Lack of means to understand user perception of service quality.

Punch Card or Task Recording

Paper based task recording or punch card leads to localized information, not easily accessible to cleaning supervisors and facility managers.

Standardize Cleanliness

"Clean" is a very subjective quantity. So it's hard to achieve expected cleaning standards with changing cleaning companies and cleaners.

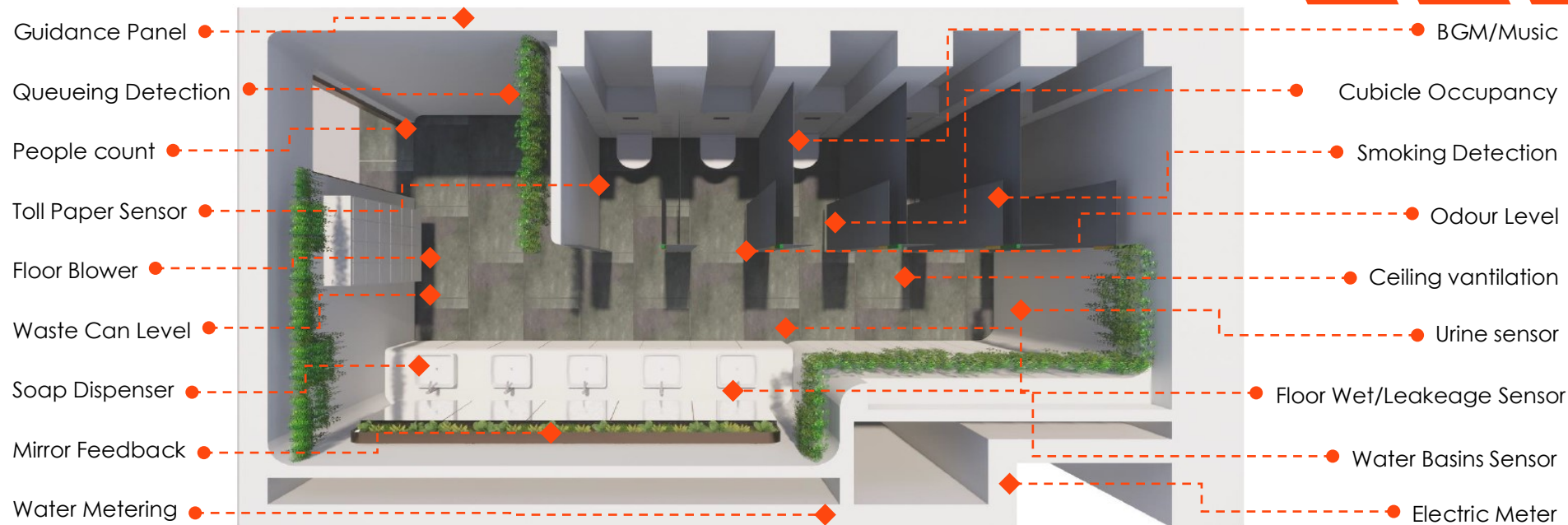
Manpower Wastage

Toilet usage pattern varies with time-of-use and type-of-day. Hence, scheduled or even fixed monitoring wastes manpower.

SmarToilets® Our Public Washroom Cleaning management solution provides a Next-Generation approach to toilet cleaning, with real-time monitoring of toilet facilities via different kind of sensors embedded around the toilet. Can also Provide useful customer feedback, monitoring everything from Air quality, Wetness levels, Roll Paper Dispenser, Soap Dispenser to how many times the toilet has been used,.

The system uses AI-assisted processes to evaluate and rate toilet cleanliness, then trigger alert to cleaners of issues, so they can be resolved quickly and efficiently without delay. Using ML & AI technology, the collected data allows the AI to learn the usage patterns of the facility and based on this, propose manpower requirements, required consumables inventories, to optimize its management and make dramatic time and cost savings, while improving the overall customer experience.



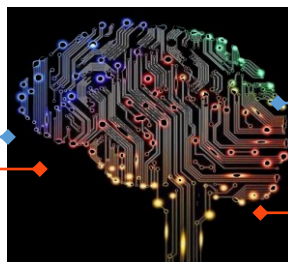


Sensor

Many kinds of, such as Odour Level Sensor, Temp, Humidity, consumable dispensers

Cleaner Schedule Apps

Auto attendance system, tickets logs/schedule, alerts, workflow management



Cleaning Service Dashboard

Cleaning quality, real-time monitoring, ticket logging, event driven

RESO owner Dashboard

Sensor Data based, user feedback, workflow and evaluation report

AI-assisted-Cleaning Service Supervisor

Insights across multiple restroom with sensor data, usage pattern, coherent processing, smart scheduling



SmarToilets® Smart Restroom Management System



Address: 1001, HSAE building, Hi-Tech South 6th Road,
NanShan District, Shenzhen, China (518057)

Phone: +86-755-86503595, 86503596

Mobile/Wechat/WhatsApp: +86-18126164508

Web: <http://www.yunhorn.com>

Email: sales@yunhorn.com